

# AirMMax

**Air Bearing Turbo Blower**

[www.AirMMaxBlower.com](http://www.AirMMaxBlower.com)



**Qingdao AirMMax Aeration Equipment Co., Ltd**

## • About AirMMax

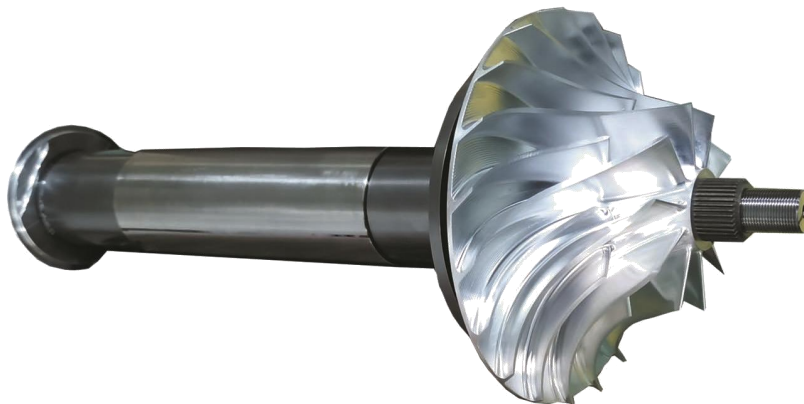
We established AirMMax with the vision to develop the company into a leading roots blower and turbo blower manufacturer and supplier. We built a 10000 m2 modern production plant equipped with automatic production CNC machine and experienced engineer and skilled assembly and installation worker in our team, which ensure AirMMax roots blower and turbo blower achieve a better operational performance and customer satisfaction.

We focus on the R&D, production, marketing and service of roots blower, turbo blower and turbo blower aerator, we design and manufacture roots blower, turbo blower and turbo blower aerator based on its unique application site and operating condition.

We have professional engineer who knows blower aeration system in water treatment plant, we have aquaculture expert who have 10 years experience in aquaculture aeration system in high density shrimp farming and hatchery, which ensure turbo blower aerator save more electricity, and we have biogas blower expert who is skilled in POME treatment to biogas power generation.

We work as solution provider on the basis of roots blower, turbo blower and turbo blower aerator, our aquaculture technical team design aeration system for high density shrimp farming and hatchery, our purchase expert launch one-stop purchase package including aerotube and diffuser, HDPE liner for customer.

Pursuit of “Customer Supreme, Quality First”, we look forward to your continuous trust and support.





## ● AirMMax Turbo Blower

AirMMax turbo blower is high speed centrifugal blower, which is specially designed and developed for water treatment and shrimp farming, it has been the the most efficient blower by saving 50% more electricity bill than traditional roots blower.

Disc diffuser is microporous diffuser, which release fine bubble uniformly from the wall of disc diffuser at the bottom of of pond.

Turbo blower supply clean air through pipe to disc diffuser and clean air pass through diffuser wall and transform into fine bubble, fine bubble rise slowly from the pond bottom to the surface which makes fine bubble have higher surface contact area and longer contact period with water, which ensure oxygen of fine bubble efficiently dissolved into the water, under the oxygen dissolution process, dissolved oxygen effect is remarkable and dramatically improve the oxygen content in the water.



## AirMMax Turbo Blower Core Technology

### High Efficient Impeller

AirMMax turbo blower adopt forged aluminum alloy material and machined by five axis CNC machine, which ensure impeller higher rotation speed and higher efficiency.



### High Efficient VFD

AirMMax turbo blower is controlled by high efficiency VFD with working frequency range 0-2000Hz to adjust air flow and pressure.



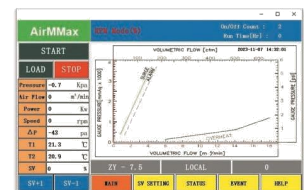
### Permanent-magnet Synchronous Motor

AirMMax turbo blower is high efficient permanent magnet synchronous motor rotating maximum at 100.000rpm with efficiency reach 98%.



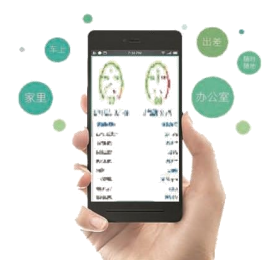
### Touch Screen Control Panel

AirMMax turbo blower is equipped with touch screen, which is easy to operate.



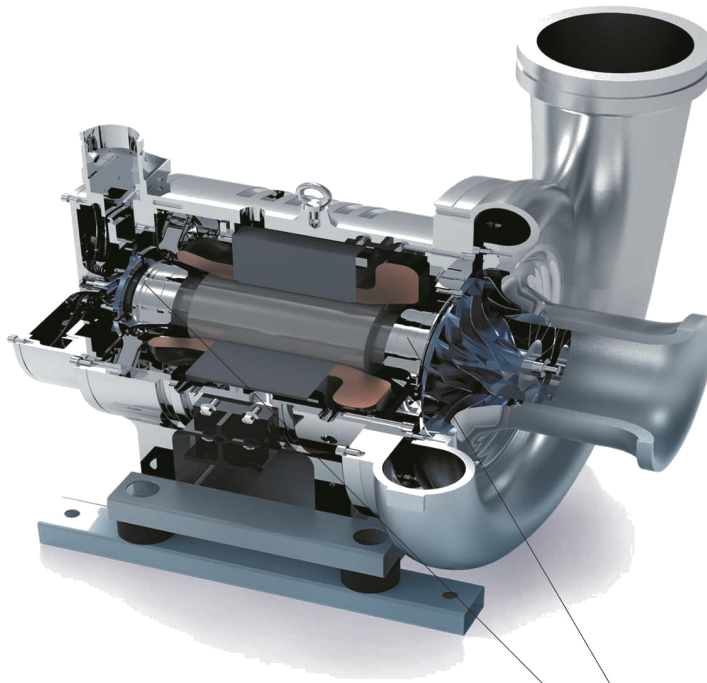
### Mobile Phone Remote Control

AirMMax turbo blower can be monitored and operated by mobile phone wherever you are.

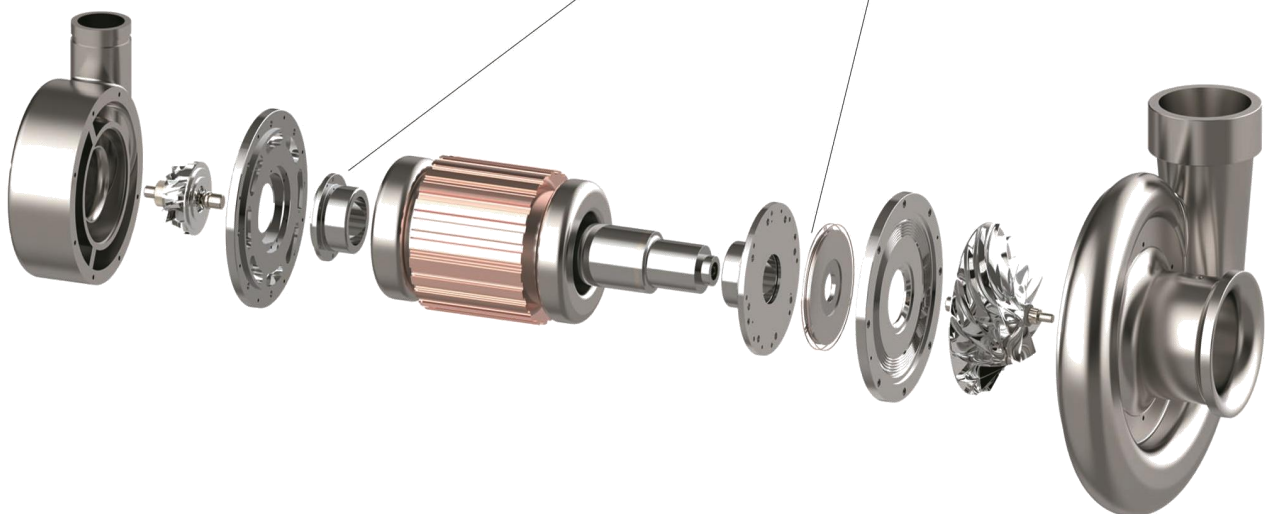




## • AirMMax Turbo Blower Core Technology



- AirMMax turbo blower is equipped with dynamic air bearing with NO contact between motor shaft and bearing and NO need lubricant.





## **AirMMax Turbo Blower Advantage**



### **High Efficient and Energy Saving**

AirMMax turbo blower save 50% more electricity bill than traditional roots blower.



### **Easy Installation**

AirMMax turbo blower is highly integrated, low weight and easy to move, user only need to connect power cable.



### **Plug and Play**

AirMMax turbo blower is operated by the touch screen to adjust frequency and reach required air flow and pressure.



### **Easy Maintenance**

AirMMax turbo blower is no lubricant oil type design, which keep away from the troubles brought by lubricant oil in traditional roots blower and centrifugal blower.

## ● Sewage Water Treatment Plant



Parameter	Turbo Blower	Roots Blower
Rated Power (kW)	75	90
Rated Flow(m <sup>3</sup> /min)	58.5	58.38
Pipe Pressure (kPa)	65	60
Average (15 days)	1530.8 kw/day	2108.8 kw/day
Total 360 hours (15 days)	63.78 kw/hour	87.86 kw/hour
Electricity saved per day	578 kw/day	
Power saving rate	27.4%	

## ● Penaeus Vannamei Shrimp Farm



Parameter	Turbo Blower	Roots Blower
Rated Power (kW)	3*15kw	3*30kw
Rated Flow (m <sup>3</sup> /min)	118	85
Pipe Pressure (kPa)	20	31
Average (29 days)	888 kw/day	2064 kw/day
Electricity saved per day	1176 kw/day	
Power saving rate	56.98%	



## • AirMMax Turbo Blower Parameter Table

Model	3HP	5.5HP	7HP	10HP	15HP	20HP	30HP	40HP	50HP	75HP	100HP
Discharge Pressure kpa	Air Flow(m <sup>3</sup> /min), 20℃, Humidity60%, 1atm										
30	/	/	7	10	12	18	29	43	52	88	107
40	2.5	5	6	9	11	16	27	38	47	76	95
50	/	/	5	8	10	14	24	33	40	59	77
60	/	/	4.5	7	9	12	21	28	35	53	69
70	/	/	4	6	8	9	19	25	31	46	63
80	/	/	3	5	7	8	18	22	28	41	55
90	/	/	/	/	/	/	15	19	25	37	50
100	/	/	/	/	/	/	13	17	22	34	45
110	/	/	/	/	/	/	/	/	/	29	41
120	/	/	/	/	/	/	/	/	/	/	38
Shaft Power(kw)	2.2	4	5	7.5	11	15	23	30	38	58	75
Blower Power(kw)	3	5.5	6.5	9	12.5	17.5	28	37	44	68	83
Model	125HP	150HP	175HP	200HP	250HP	300HP	350HP	400HP	500HP	600HP	800HP
Discharge Pressure kpa	Air Flow(m <sup>3</sup> /min), 20℃, Humidity60%, 1atm										
30	142	173	196	222	261	288	334	371	/	/	/
40	120	150	172	190	228	256	296	335	430	540	747
50	95	115	129	156	196	225	270	311	384	490	622
60	87	105	110	140	170	210	246	280	334	420	552
70	78	92	106	120	155	181	208	235	298	378	477
80	70	85	98	110	136	160	190	220	260	336	429
90	62	70	79	94	122	138	163	186	240	302	380
100	56	65	75	88	110	126	150	174	224	282	357
110	50	59	70	82	101	120	140	161	202	268	330
120	45	53	65	75	90	116	131	148	188	250	309
Shaft Power(kw)	94	114	130	150	185	225	262	300	375	450	557
Blower Power(kw)	102	124	142	175	208	244	295	320	400	500	600

- **AirMMax Turbo Blower Aeartor (For Shrimp Farming)**

Model	3HP	5.5HP	7.5HP	10HP	15HP	20HP	30HP	40HP	50HP	60HP	75HP
Pressure KPA	Air Flow M3/MIN										
10	/	/	12	22	29	42	56	79	103	120	130
15	/	/	11	21	28	38	53	75	99	110	122
20	/	/	10	18	26	36	49	71	95	106	118
25	/	/	9	14	21	29	41	58	71	95	105
30	/	/	8	12	19	26	38	48	65	83	95
40	2.5	5	7	9	15	17	26	36	45	54	65

- **AirMMax Turbo Compressor Parameter Table**

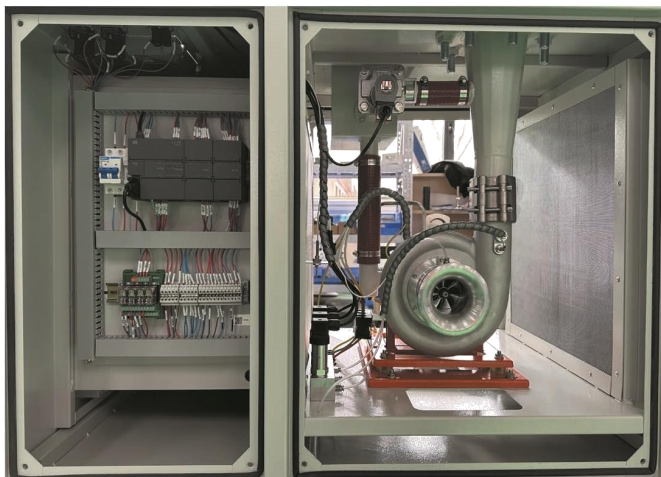
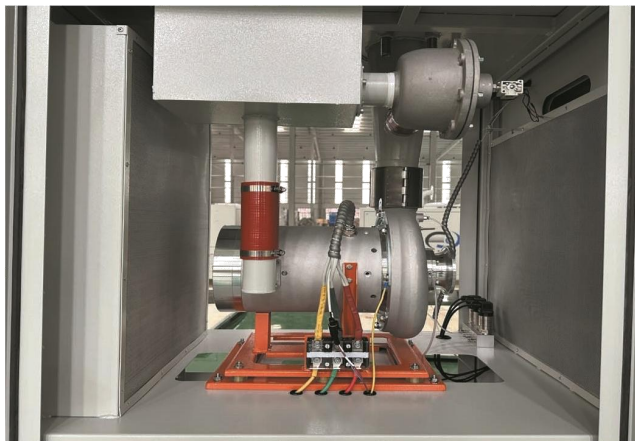
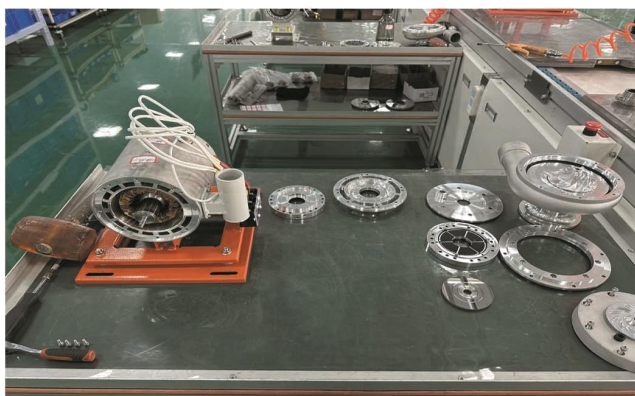
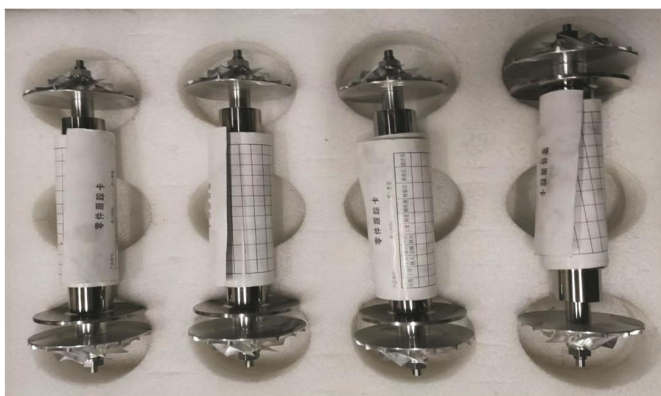
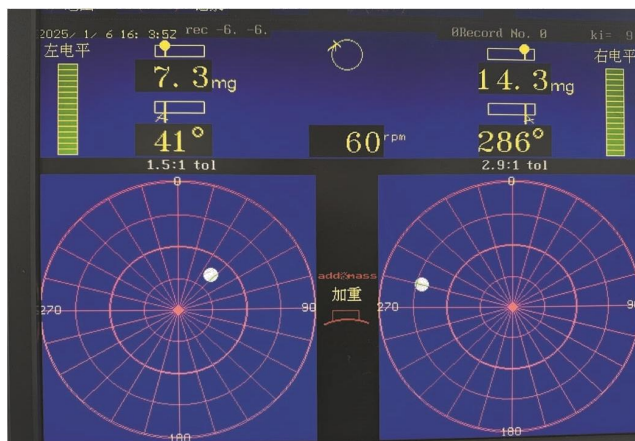
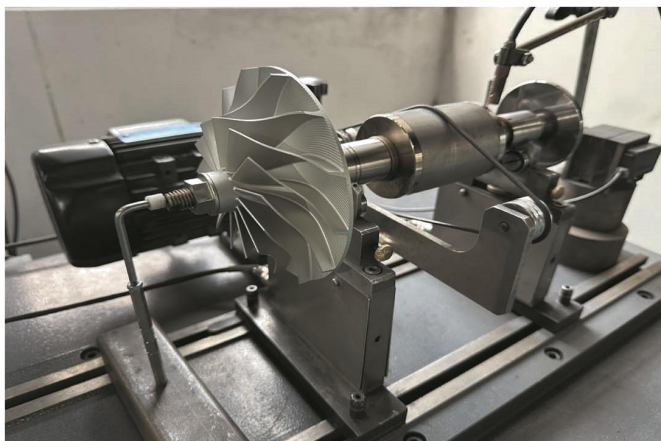
Model	100HP	125HP	150HP	200HP	250HP	300HP	400HP
Discharge Pressure kpa	Air Flow(m <sup>3</sup> /min), 20℃, Humidity60%, 1atm						
150	32	48	60	69	81	121	/
200	25	/	37	65	71	75	100
300	/	/	/	/	/	105	/
350	20	/	/	37	/	/	/
400	/	/	/	36	/	55	/
500	/	/	/	/	/	46	58



## • AirMMax Factory











## **Qingdao AirMMax Aeration Equipment Co., Ltd**

Add: ZhangJiaLou Industrial Park, Qingdao City, Shandong Province, China.

M: +8618354211179 (whatsapp/wechat)

Email: [inquiry@airmmmax.com](mailto:inquiry@airmmmax.com)

Website: [www.AirMMMaxBlower.com](http://www.AirMMMaxBlower.com)

