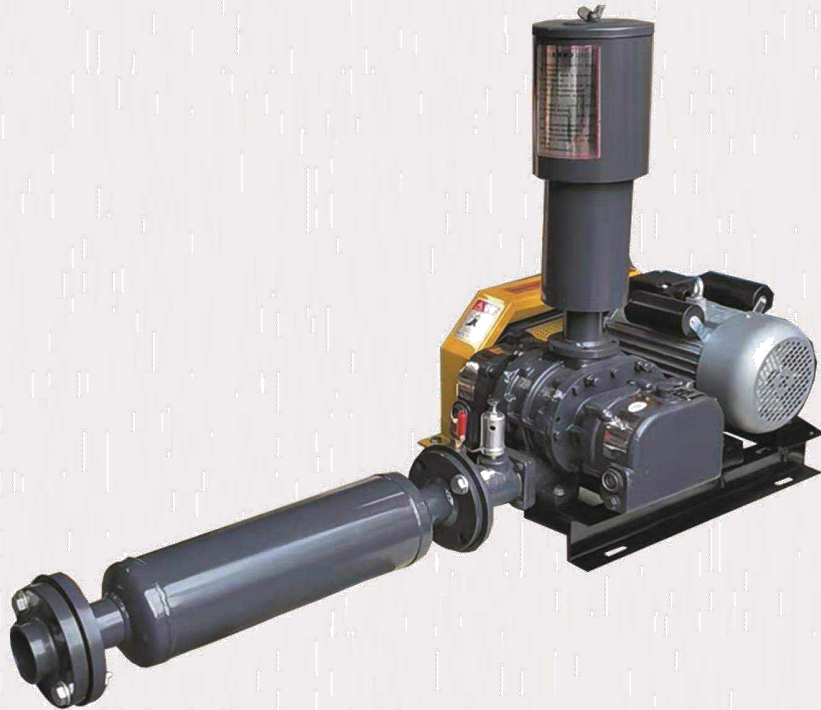


AirMMax

AMSR Three Lobe Roots Blower

www.AirMMaxBlower.com



Qingdao AirMMax Aeration Equipment Co., Ltd

ABOUT US

We established AirMMax with the vision to develop the company into a leading roots blower and turbo blower manufacturer and supplier. We built a 10000 m² modern production plant equipped with automatic production CNC machine and experienced engineer and skilled assembly and installation worker in our team, which ensure AirMMax roots blower and turbo blower achieve a better operational performance and customer satisfaction.

We focus on the R&D, production, marketing and service of roots blower, turbo blower and turbo blower aerator, we design and manufacture roots blower, turbo blower and turbo blower aerator based on its unique application site and operating condition.

We have professional engineer who knows blower aeration system in water treatment plant, we have aquaculture expert who have 10 years experience in aquaculture aeration system in high density shrimp farming and hatchery, which ensure turbo blower aerator save more electricity, and we have biogas blower expert who is skilled in POME treatment to biogas power generation.

We work as solution provider on the basis of roots blower, turbo blower and turbo blower aerator, our aquaculture technical team design aeration system for high density shrimp farming and hatchery, our purchase expert launch one-stop purchase package including aerotube and diffuser, HDPE liner for customer.

Pursuit of “Customer Supreme, Quality First”, we look forward to your continuous trust and support.



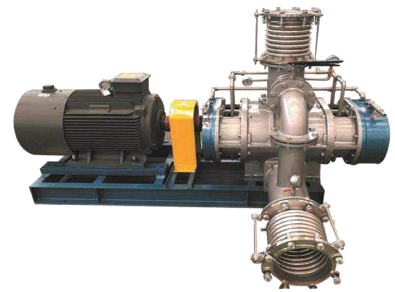
ROOTS BLOWER

AirMMax roots blower is three lobe type roots blower with pressure reaching up to 150kpa in single stage roots blower and pressure reaching up to 200kpa in double stage roots blower, air capacity reach up to 30000m³/hour.



STAINLESS STEEL BLOWER

AirMMax stainless steel blower is SS304, SS316L and 2205 material, we cooperate qualified stainless steel foundry factory and machined by professional stainless steel CNC machine.



BIOGAS BLOWER

AirMMax biogas blower is specially designed and developed to boost biogas in biogas plant in the palm oil mill effluent (POME) treatment system.



TURBO BLOWER

AirMMax has both air bearing turbo blower and magnetic bearing turbo blower.



AMSR Three Lobe Roots Blower

Pressure Performance Table

Qs: Inlet air flow (m³/min)

La: Blower shaft power (Kw)

Model	Bore	RPM	Pressure																							
			9.8KPA		14.7KPA		19.6KPA		24.5KPA		29.4KPA		34.3KPA		39.2KPA		44.1KPA		49KPA		53.9KPA		58.8KPA			
			Qs	La	Qs	La	Qs	La	Qs	La	Qs	La	Qs	La	Qs	La	Qs	La	Qs	La	Qs	La	Qs	La		
AMSR 50	50A	1100	1.23	0.30	1.15	0.41	1.13	0.52	1.04	0.67	0.99	0.78	0.93	0.91	0.90	1.04	0.84	1.16	0.79	1.32	0.70	1.54	0.68	1.60		
		1240	1.39	0.38	1.31	0.50	1.28	0.64	1.19	0.79	1.14	0.92	1.08	1.05	1.05	1.20	0.99	1.37	0.95	1.49	0.88	1.65	0.85	1.78		
		1350	1.54	0.44	1.46	0.61	1.43	0.74	1.33	0.85	1.28	1.04	1.26	1.17	1.19	1.34	1.16	1.53	1.10	1.65	1.03	1.80	1.00	1.95		
		1450	1.67	0.50	1.56	0.64	1.55	0.82	1.44	0.96	1.40	1.14	1.35	1.30	1.30	1.47	1.22	1.63	1.21	1.79	1.12	1.91	1.15	2.15		
		1530	1.76	0.56	1.67	0.75	1.64	0.90	1.54	1.07	1.49	1.24	1.46	1.41	1.39	1.58	1.34	1.74	1.31	1.92	1.28	2.12	1.25	2.29		
		1640	1.90	0.64	1.80	0.81	1.77	1.01	1.72	1.15	1.62	1.37	1.68	1.54	1.55	1.74	1.51	1.88	1.44	2.10	1.40	2.28	1.39	2.49		
		1730	2.01	0.71	1.92	0.95	1.88	1.10	1.83	1.25	1.73	1.48	1.80	1.68	1.62	1.86	1.71	2.03	1.54	2.25	1.64	2.47	1.49	2.66		
		1840	2.14	0.80	2.12	1.03	2.01	1.20	2.00	1.39	1.86	1.62	1.93	1.79	1.75	2.02	1.84	2.25	1.68	2.43	1.77	2.65	1.63	2.86		
AMSR 65	65A	1140	1.68	0.38	1.56	0.63	1.49	0.80	1.43	1.02	1.32	1.16	1.24	1.37	1.18	1.52	1.15	1.74	1.08	1.82	0.99	2.02	0.96	2.16		
		1240	1.93	0.48	1.85	0.72	1.74	0.92	1.64	1.14	1.58	1.33	1.53	1.55	1.44	1.74	1.36	1.94	1.33	2.10	1.25	2.32	1.22	2.48		
		1360	2.17	0.56	2.09	0.83	1.99	1.04	1.86	1.26	1.82	1.48	1.78	1.73	1.68	1.94	1.65	2.20	1.57	2.35	1.51	2.55	1.43	2.72		
		1450	2.32	0.63	2.25	0.85	2.15	1.12	2.06	1.36	2.00	1.60	1.96	1.83	1.86	2.10	1.83	2.34	1.75	2.54	1.70	2.75	1.64	3.00		
		1530	2.46	0.70	2.36	0.98	2.29	1.20	2.24	1.47	2.14	1.72	2.10	1.95	2.02	2.25	1.98	2.52	1.91	2.72	1.86	2.95	1.80	3.20		
		1640	2.67	0.80	2.60	1.05	2.50	1.33	2.45	1.62	2.36	1.89	2.33	2.15	2.24	2.41	2.21	2.75	2.13	2.95	2.08	3.24	2.02	3.46		
		1740	2.87	0.89	2.94	1.20	2.70	1.46	2.65	1.76	2.56	2.04	2.54	2.32	2.44	2.64	2.42	2.96	2.33	3.16	2.28	3.47	2.22	3.70		
		1820	3.03	0.96	3.02	1.25	2.86	1.56	2.84	1.88	2.72	2.16	2.69	2.44	2.60	2.79	2.57	3.12	2.49	3.33	2.44	3.65	2.38	3.90		
AMSR 80	80A	1140	3.10	1.04	3.03	1.34	2.91	1.60	2.83	1.95	2.78	2.14	2.69	2.45	2.63	2.69	2.53	3.02	2.49	3.22	2.38	3.45	2.37	3.74		
		1230	3.38	1.14	3.26	1.44	3.19	1.76	3.09	2.04	3.06	2.35	2.96	2.63	2.91	2.94	2.81	3.25	2.77	3.53	2.65	3.83	2.64	4.11		
		1300	3.60	1.22	3.53	1.55	3.42	1.89	3.36	2.23	3.27	2.51	3.23	2.85	3.12	3.14	3.06	3.47	2.98	3.77	2.92	4.07	2.85	4.41		
		1360	3.78	1.29	4.00	1.65	3.60	1.99	3.83	2.35	3.46	2.64	3.70	2.97	3.30	3.31	3.54	3.65	3.17	3.98	3.40	4.32	3.03	4.65		
		1460	4.09	1.40	4.01	1.80	3.91	2.17	3.89	2.53	3.76	2.87	3.73	3.22	3.62	3.60	3.57	3.91	3.47	4.32	3.42	4.65	3.35	5.06		
		1560	4.39	1.52	4.20	1.95	4.11	2.32	4.04	2.76	4.00	3.10	3.99	3.46	3.93	3.88	3.89	4.41	3.78	4.66	3.70	5.25	3.66	5.48		
		1650	4.67	1.62	4.56	2.13	4.49	2.50	4.44	2.94	4.36	3.31	4.23	3.75	4.16	4.14	4.11	4.74	4.06	4.98	4.00	5.62	3.93	5.85		
		1730	4.91	1.71	4.81	2.25	4.74	2.64	4.70	3.05	4.60	3.50	4.55	3.94	4.46	4.36	4.43	4.82	4.31	5.26	4.26	5.72	4.19	6.18		
AMSR 100	100A	1820	5.19	1.81	5.13	2.35	5.01	2.80	4.97	3.25	4.88	3.70	4.81	4.13	4.74	4.62	4.66	5.06	4.59	5.57	4.50	6.04	4.46	6.56		
		1060	4.58	1.35	4.43	1.83	4.28	2.31	4.08	2.72	3.95	3.10	3.85	3.55	3.70	3.97	3.58	4.46	3.49	4.95	3.35	5.42	3.29	5.86		
		1140	4.98	1.52	4.83	2.03	4.66	2.46	4.53	2.94	4.36	3.41	4.26	3.93	4.12	4.38	4.04	4.86	3.91	5.38	3.83	5.85	3.72	6.38		
		1220	5.38	1.68	5.16	2.22	5.04	2.70	4.88	3.23	4.76	3.71	4.64	4.22	4.53	4.76	4.45	5.27	4.33	5.76	4.25	6.35	4.14	6.90		
		1310	5.74	1.87	5.61	2.43	5.45	2.96	5.35	3.52	5.18	4.05	5.06	4.63	4.95	5.18	4.87	5.77	4.75	6.30	4.66	6.95	4.56	7.48		
		1460	6.54	2.18	6.36	2.75	6.26	3.40	6.14	3.95	6.00	4.62	5.88	5.22	5.78	5.87	5.67	6.54	5.59	7.10	5.45	7.76	5.40	8.45		
		1560	6.92	2.40	6.80	3.04	6.65	3.67	6.56	4.32	6.40	4.98	6.31	5.65	6.19	6.30	6.08	6.97	6.00	7.61	5.89	8.35	5.82	9.00		
		1680	7.64	2.78	7.48	3.45	7.37	4.18	7.27	4.92	7.13	5.62	7.05	6.33	6.92	7.08	6.85	7.85	6.74	8.50	6.65	9.32	6.56	10.03		
AMSR 125	125A	1780	8.10	3.05	7.95	3.83	7.85	4.56	7.76	5.35	7.62	6.10	7.55	6.84	7.42	7.63	7.35	8.45	7.24	9.15	7.16	9.95	7.07	10.71		
		1880	8.58	3.33	8.44	4.15	8.37	4.93	8.24	5.77	8.15	6.55	8.04	7.35	7.95	8.18	7.89	9.03	7.78	9.80	7.65	10.64	7.61	11.42		
		980	6.51	1.65	6.33	2.25	6.16	2.80	6.04	3.42	5.95	4.10	5.81	4.73	5.75	5.40	5.63	6.13	5.56	6.70	5.45	7.22	5.38	8.05		
		1050	6.96	1.90	6.76	2.53	6.64	3.15	6.53	3.83	6.42	4.53	6.33	5.22	6.22	5.95	6.14	6.63	6.04	7.30	5.93	7.93	5.86	8.75		
		1200	8.01	2.50	7.83	3.22	7.66	3.92	7.54	4.72	7.45	5.50	7.33	6.25	7.25	7.10	7.13	7.92	7.01	8.65	6.95	9.43	6.91	10.25		
		1300	8.76	2.90	8.54	3.63	8.41	4.50	8.26	5.33	8.19	6.20	8.08	7.03	8.00	7.90	7.94	8.83	7.83	9.65	7.76	10.03	7.65	11.40		
		1390	9.31	3.20	9.13	4.02	8.96	4.90	8.86	5.82	8.74	6.70	8.66	7.62	8.54	8.50	8.43	9.42	8.38	10.35	8.25	11.27	8.21	12.20		
		1450	9.73	3.45	9.49	4.23	9.36	5.20	9.24	6.13	9.15	7.10	9.04	8.03	8.95	9.00	8.83	9.93	8.78	10.90	8.73	11.82	8.61	12.80		
AMSR 125L	125A	1530	10.28	3.80	10.10	4.72	9.91	5.65	9.83	6.63	9.70	7.65	9.63	8.62	9.50	9.60	9.44	10.62	9.34	11.60	9.23	12.63	9.16	13.60		
		1630	10.97	4.30	10.74	5.23	10.58	6.25	10.46	7.23	10.37	8.35	10.26	9.33	10.17	10.35	10.09	11.33	10.02	12.40	9.95	13.53	9.86	14.60		
		1750	11.79	4.90	11.53	5.82	11.39	6.95	11.28	7.93	11.18	9.18	11.08	10.22	10.99	11.26	10.94	12.35	10.84	13.38	10.73	14.72	10.67	15.80		
		1290	12.48	5.33	12.28	6.47	12.10	7.61	11.93	8.70	11.75	9.88	11.61	11.02	11.46	12.15	11.33	13.29	11.20	14.43	11.06	15.56	10.94	16.69		
AMSR 125L	125A	1350	13.11	5.57	12.91	6.75	12.72	7.94	12.55	9.12	12.39	10.31	12.24	11.49	12.08	12.68	11.95	13.86	11.82	15.05	11.68	16.23	11.57	17.42		
		1430	13.95	5.88	13.74	7.13	13.56	8.38	13.38	9.63	13.21	10.88	13.07	12.13	12.91	13.38	12.78	14.63	12.65	15.87	12.52	17.13	12.40	18.38		
		1530	14.99	6.26	14.78	7.59	14.59	8.93	14.43	10.25	14.25	11.58	14.13	12.92	13.96	14.25	13.83	15.58	13.69	16.91	13.56	18.25	13.45	19.58		
		1650	16.24	6.72	16.04	8.15	15.85	9.58	15.68	11.01	15.51	12.44	15.36	13.87	15.21	15.30	15.08	16.73	14.95	18.16	14.81	19.59	14.7	21.02		

AMSR Three Lobe Roots Blower

Pressure Performance Table

Qs: Inlet air flow (m3/min)

La: Blower shaft power (Kw)

Model	Bore	RPM	Pressure																							
			9.8KPA		14.7KPA		19.6KPA		24.5KPA		29.4KPA		34.3KPA		39.2KPA		44.1KPA		49KPA		53.9KPA		58.8KPA			
			Qs	La	Qs	La	Qs	La	Qs	La	Qs	La	Qs	La	Qs	La	Qs	La	Qs	La	Qs	La	Qs	La		
AMSR 150	150A	810	12.02	3.86	11.75	5.03	11.54	6.20	11.33	7.32	11.15	8.50	11.02	9.62	10.86	10.74	11.97	10.65	13.20	10.45	14.42	10.39	15.60			
		860	12.81	4.41	12.64	5.63	12.40	6.86	12.23	8.03	12.03	9.30	11.84	10.47	11.75	11.70	11.63	13.03	11.54	14.25	11.42	15.53	11.27	16.80		
		970	14.71	5.59	14.52	7.02	14.30	8.30	14.13	9.63	13.95	11.05	13.82	12.43	13.70	13.80	13.62	15.23	13.50	16.60	13.33	18.03	13.23	19.40		
		1110	17.08	7.01	16.92	8.62	16.70	10.15	16.54	11.72	16.37	13.10	16.23	14.84	16.15	16.50	16.07	18.03	15.95	19.60	15.82	21.23	15.70	22.80		
		1180	18.25	7.80	18.13	9.43	17.92	11.10	17.75	12.73	17.59	14.40	17.46	16.03	17.37	17.80	17.25	19.42	17.17	21.10	17.05	22.82	16.97	24.40		
		1240	19.27	8.45	19.12	10.21	18.95	11.90	18.75	13.62	18.63	15.40	18.55	17.05	18.43	18.90	18.35	20.72	18.23	22.40	18.15	24.23	18.03	25.80		
		1400	22.00	10.20	21.85	12.12	21.70	14.00	21.53	15.93	21.40	17.90	21.32	19.92	21.20	21.90	21.15	23.83	21.05	25.80	20.95	27.93	20.87	29.70		
		1450	22.85	10.70	22.70	12.75	22.58	14.68	22.45	16.68	22.33	18.70	22.23	20.80	22.12	22.90	22.01	24.85	21.92	26.88	21.83	29.00	21.74	30.90		
		1520	23.93	11.65	23.84	13.38	23.68	15.90	23.52	17.43	23.40	20.15	22.56	21.59	23.21	24.60	23.13	25.84	23.04	28.90	22.95	30.20	22.82	33.30		
		1620	25.42	13.40	25.32	15.62	25.15	18.00	25.02	20.42	24.86	22.60	24.74	25.03	24.68	27.40	24.55	29.63	24.48	32.05	24.32	34.42	24.27	36.90		
1730	27.05	15.30	26.94	17.63	26.77	20.20	26.63	22.92	26.48	25.30	26.33	27.92	26.27	30.40	26.15	33.02	26.08	35.55	25.95	38.02	25.87	40.89				
AMSR 175	150A	970	22.73	7.90	22.20	10.19	22.13	11.25	21.63	13.35	21.05	15.46	20.85	17.57	20.53	19.65	20.21	21.75	20.12	23.87	19.83	26.03	19.65	28.14		
		1110	26.75	12.21	26.54	11.94	26.33	13.14	25.83	15.53	25.50	17.93	25.24	20.33	24.83	22.73	24.55	25.10	24.23	27.53	24.07	29.93	23.95	32.33		
		1180	28.65	13.23	28.50	12.54	28.35	13.84	27.96	16.35	27.55	18.95	27.17	21.47	26.83	24.07	26.57	26.63	29.15	26.15	31.74	25.95	34.26			
		1240	30.25	12.65	30.10	13.43	29.94	14.75	29.53	17.47	29.15	20.16	28.85	22.58	28.55	25.54	28.27	28.24	28.05	30.93	27.84	33.65	27.63	36.26		
		1400	34.22	16.75	33.93	16.70	33.65	18.54	33.35	21.65	33.26	25.54	32.83	27.57	32.55	30.64	32.33	33.63	32.03	36.65	31.82	39.71	31.62	42.76		
		1460	35.26	17.47	35.10	17.25	35.04	19.09	34.69	22.45	34.50	25.79	34.09	28.55	33.86	31.74	33.64	34.85	33.34	38.01	33.18	41.68	32.94	44.36		
		1520	36.65	17.51	36.54	17.80	36.43	19.64	36.03	22.94	35.73	26.23	35.35	29.52	35.17	32.83	34.95	36.07	34.65	39.37	34.52	43.65	34.25	45.95		
		1620	38.67	18.72	38.52	21.13	38.36	22.87	38.03	26.43	37.84	29.94	37.43	33.42	37.15	36.96	36.96	40.43	36.65	43.95	36.55	47.75	36.35	50.97		
AMSR 200S	200A	900	28.68	11.02	28.50	12.25	28.35	13.84	27.87	16.24	27.55	18.95	27.12	22.35	26.83	24.07	26.56	27.89	26.34	29.15	26.10	32.08	25.95	34.26		
		1070	34.18	17.16	33.90	17.85	33.65	18.54	33.40	22.10	33.26	24.54	32.88	28.75	32.55	30.64	32.28	34.01	32.00	32.03	31.90	31.79	31.80	31.62		
		1160	36.98	17.45	36.83	18.01	36.43	19.64	36.03	23.55	35.73	26.23	35.41	30.38	35.17	32.83	34.89	36.95	34.65	39.37	34.41	43.02	34.25	45.95		
		1240	39.64	18.32	39.01	20.25	38.36	22.87	38.05	28.58	37.84	29.94	37.49	33.87	37.15	36.69	36.80	40.18	36.65	43.95	36.44	47.30	36.35	50.97		
		1320	40.79	21.47	40.49	23.25	40.17	25.03	39.85	30.01	39.64	32.53	39.38	37.98	39.15	40.03	38.91	45.12	38.77	47.53	38.61	52.61	38.45	55.03		
		1450	51.30	13.00	49.20	17.50	49.11	22.00	49.03	26.30	48.80	31.30	48.20	35.00	47.70	40.00	47.20	45.00	46.90	49.10	46.60	53.20	46.30	58.10		
AMSR 200	200A	810	31.17	11.26	30.81	12.94	30.54	14.63	29.95	17.62	29.52	20.66	29.23	23.85	28.70	26.96	28.55	29.97	28.24	33.14	27.93	36.07	27.65	39.07		
		900	35.01	13.41	34.71	15.27	34.41	17.12	34.01	20.42	33.62	24.22	33.34	27.55	33.03	30.95	32.75	34.42	32.36	37.85	32.05	41.04	31.73	44.35		
		980	38.52	15.52	38.42	17.42	38.10	19.31	37.62	22.91	37.31	27.15	37.07	30.76	36.75	34.53	36.44	38.25	36.05	42.04	35.66	45.55	35.25	49.35		
		1070	42.53	17.81	42.29	19.52	42.03	21.22	41.63	25.82	41.43	30.12	41.11	34.45	40.95	38.66	40.58	42.63	40.17	46.84	39.75	50.73	39.45	54.97		
		1150	46.01	19.92	45.76	21.82	45.51	23.71	45.31	28.12	45.01	32.74	44.82	37.24	44.62	42.04	44.23	46.64	44.75	50.97	43.44	55.07	43.18	59.76		
		1230	49.13	21.91	48.93	24.16	48.72	26.42	48.42	31.23	48.23	36.22	48.11	41.23	47.71	46.02	47.41	50.72	47.01	55.52	46.82	59.81	46.62	64.81		
		1310	52.21	24.32	52.01	26.76	51.81	29.23	51.51	34.21	51.32	39.62	51.13	44.81	50.92	50.11	50.62	55.02	50.42	59.91	50.13	64.52	49.81	69.72		
		1390	55.33	26.61	54.43	29.22	54.73	31.82	54.63	37.41	54.41	42.92	54.31	48.53	54.12	54.22	53.93	59.21	53.61	64.42	53.42	69.11	53.22	74.62		
		1480	58.81	28.92	58.61	31.58	58.41	34.23	58.21	40.41	58.03	46.52	57.82	52.33	57.71	58.11	57.51	63.62	57.36	68.92	57.22	74.22	57.14	80.12		
		1600	86.37	23.75	85.72	26.18	84.88	34.90	84.40	43.63	83.35	53.35	82.86	61.06	82.11	73.80	81.89	78.52	81.16	87.25	80.84	95.97	80.39	106.70		
AMSR 200L	200A	970	50.02	18.58	48.56	19.87	47.75	21.16	46.54	26.45	45.90	31.74	45.30	37.03	44.75	43.32	44.24	47.61	43.75	53.09	43.28	58.18	42.84	63.47		
		1250	65.84	21.64	64.88	23.45	64.08	28.67	63.37	36.08	62.72	44.90	62.13	47.72	61.58	54.53	61.06	61.35	60.57	68.16	60.11	74.98	59.66	81.79		
		1450	77.86	23.75	76.90	25.12	76.09	34.49	75.01	39.54	74.44	47.44	73.85	55.35	73.24	63.26	72.88	74.16	72.29	79.07	71.92	86.97	71.53	94.88		
		1600	86.37	24.25	85.72	26.18	84.88	34.90	84.40	43.63	83.35	53.35	82.86	61.06	82.11	73.80	81.89	78.52	81.16	87.25	80.84	95.97	80.39	106.70		
		1100	57.74	19.97	57.26	26.94	56.90	32.37	56.65	37.84	56.42	43.89	56.22	49.65	55.99	55.52	55.65	60.95	55.42	66.39	55.13	71.50	54.77	77.25		
AMSR 250S	250A	1210	63.52	23.95	63.00	29.64	62.60	35.62	62.32	41.64	62.08	48.29	61.86	54.62	61.60	61.08	61.23	67.06	60.99	73.04	60.65	78.65	60.25	84.99		
		1310	68.78	25.93	68.22	32.10	67.78	38.58	67.48	45.15	67.22	52.29	66.98	59.14	66.70	66.14	66.31	72.62	66.05	79.08						
		1390	72.83	28.12	72.35	34.98	71.85	42.00	71.61	49.38	71.38	56.65	71.13	64.05	70.98	71.57	70.74	78.15	70.57	85.03						
		1480	77.55	31.41	77.04	38.17	76.51	45.30	76.25	53.34	76.01	61.40	75.74	69.07	75.60	76.70	75.33	83.97	75.14	90.97						
		990	63.60	15.50	63.40	21.20	63.10	28.80	62.90	35.80	62.70	41.80	62.50	48.80	62.30	55.30	62.10	62.10	61.80	66.70	61.60	73.30	61.40	76.70		
AMSR 250	250A	1170	75.00	19.10	74.70	25.80	74.30	33.90	74.10	42.20	73.60	49.10	73.10	56.90	72.70	64.60	72.30	72.50	72.01	77.80	71.70	85.30	71.30	89.20		
		1250	80.30	19.60	80.00	26.80	79.60	36.30	79.20	45.20	78.80	52.60	78.50	61.10	78.20	69.50	77.90	78.10	77.40	83.60	77.10	91.70	76.80	96.10		
		1360	90.40	21.60	90.00	29.60	88.70	40.50	88.50	50.40	88.30	58.90	88.10	68.50	87.80	78.10	87.50	87.60	87.20	94.20	86.90	103.40	86.60	108.30		
		1480	97.10	23.20	96.50	31.50	96.50	44.10	96.20	54.80	96.00	64.10	95.80	74.50	95.50	84.90	95.20	95.80	95.10	102.60	94.50	112.50	94.40	117.30		
		990	89.30	21.90	89.20	30.10	88.90	32.10	88.70																	

AMSR Three Lobe Roots Blower

Pressure Performance Table

Qs: Inlet air flow (m³/min)

La: Blower shaft power (Kw)

Model	Bore	RPM	Pressure															
			63.7KPA		68.6KPA		73.5KPA		78.4KPA		83.3KPA		88.2KPA		93.1KPA		98.0KPA	
			Qs	La	Qs	La	Qs	La	Qs	La	Qs	La	Qs	La	Qs	La	Qs	La
AMSR 50	50A	1240	0.79	2.02	0.73	2.10	0.69	2.49	0.62	2.79	0.61	3.37	0.56	3.95	0.50	4.17	0.45	4.41
		1350	0.96	2.24	0.85	2.28	0.86	2.76	0.79	3.01	0.78	3.40	0.76	3.92	0.73	4.37	0.69	4.81
		1450	1.07	2.36	1.00	2.42	0.97	2.90	0.93	3.21	0.90	3.68	0.87	4.05	0.83	4.60	0.79	5.07
		1530	1.23	2.56	1.18	2.52	1.16	3.18	1.13	3.56	1.08	3.88	1.03	4.20	0.90	4.61	0.85	5.10
		1640	1.39	2.76	1.35	2.63	1.32	3.32	1.29	3.75	1.24	4.27	1.18	4.43	1.13	4.80	1.06	5.20
		1730	1.50	2.93	1.46	2.92	1.42	3.54	1.39	3.91	1.31	4.38	1.26	4.70	1.22	5.12	1.14	5.50
AMSR 65	65A	1240	1.13	2.89	1.10	2.88	1.03	3.49	0.98	4.01	0.89	4.20	0.88	4.56	0.83	4.92	0.78	5.28
		1360	1.39	3.08	1.31	3.05	1.28	3.76	1.19	4.12	1.17	4.40	1.15	5.02	1.12	5.40	1.08	5.87
		1450	1.60	3.35	1.51	3.42	1.47	4.05	1.40	4.21	1.41	4.85	1.38	5.23	1.35	5.51	1.31	5.96
		1530	1.74	3.50	1.70	3.60	1.64	4.14	1.57	4.39	1.53	5.10	1.48	5.40	1.42	5.62	1.35	6.01
		1640	1.98	3.74	1.90	3.94	1.86	4.42	1.79	4.54	1.75	5.25	1.70	5.40	1.65	5.78	1.60	6.10
		1740	2.18	4.13	2.10	4.27	2.06	5.05	2.00	4.65	1.92	5.80	1.84	6.10	1.75	6.35	1.70	6.50
AMSR 80	80A	1140	2.27	4.09	2.25	4.22	2.19	4.83	2.14	4.73	2.01	5.61	1.96	5.97	1.89	6.33	1.82	6.69
		1230	2.52	4.49	2.49	4.71	2.37	5.30	2.35	5.32	2.25	6.10	2.19	6.45	2.12	6.81	2.06	7.17
		1300	2.77	4.82	2.71	5.11	2.61	5.69	2.55	5.85	2.48	6.40	2.40	6.71	2.35	7.26	2.29	7.66
		1360	2.95	5.18	2.87	5.27	2.77	5.99	2.73	5.93	2.62	6.80	2.57	7.21	2.49	7.53	2.46	7.93
		1460	3.07	5.67	3.22	5.76	2.92	6.44	3.10	6.46	2.78	7.03	2.65	7.38	2.60	7.90	2.55	8.10
		1560	3.44	6.17	3.38	6.25	3.30	6.97	3.24	7.05	3.18	7.40	3.15	7.70	3.10	8.12	3.07	8.35
		1650	3.73	6.55	3.68	6.72	3.62	7.45	3.55	7.63	3.40	8.00	3.32	8.20	3.27	8.40	3.21	8.70
		1730	4.01	6.94	3.96	7.05	3.88	7.84	3.79	7.95	3.70	8.40	3.65	8.71	3.61	8.98	3.52	9.10
AMSR 100	100A	1060	3.17	6.36	3.07	6.71	3.01	7.51	2.87	7.62	2.87	8.53	2.79	8.89	2.72	9.25	2.65	9.61
		1140	3.65	6.90	3.59	7.32	3.51	8.15	3.46	8.35	3.40	8.90	3.36	9.10	3.54	9.50	3.48	9.86
		1220	4.06	7.52	3.93	8.02	3.90	8.88	3.82	9.12	3.75	10.10	3.68	10.40	3.61	11.32	3.55	11.96
		1310	4.43	8.15	4.36	8.56	4.26	9.62	4.18	9.65	4.10	10.82	4.03	11.50	3.90	11.71	3.82	12.10
		1460	5.28	9.23	5.19	9.37	5.10	10.44	5.00	10.06	4.78	11.32	4.61	11.85	4.48	12.30	4.30	12.75
		1560	5.70	9.75	5.63	10.35	5.55	11.12	5.45	11.75	5.38	11.98	5.32	12.21	5.24	12.80	5.15	13.20
		1680	6.44	10.77	6.37	11.50	6.25	12.21	6.20	12.61	6.00	12.90	5.85	13.20	5.71	13.67	5.49	14.10
		1780	6.95	11.52	6.88	11.98	6.83	13.07	6.70	13.45	6.55	13.92	6.38	14.10	6.10	14.52	5.91	14.88
AMSR 125	125A	980	5.24	8.92	5.19	9.34	5.08	10.98	5.01	10.65	4.86	13.20	4.78	14.10	4.71	15.30	4.64	16.40
		1050	5.54	9.71	5.42	10.15	5.32	11.98	5.27	11.60	5.11	14.08	5.01	15.11	4.92	16.01	4.80	16.71
		1200	6.83	11.05	6.77	11.84	6.66	12.56	6.45	13.44	6.21	14.23	6.06	15.38	5.80	16.26	5.55	16.91
		1300	7.55	12.22	7.45	13.15	7.38	13.92	7.26	14.93	7.01	15.66	6.53	16.43	6.56	17.01	6.22	17.85
		1390	8.14	13.14	8.03	13.95	7.92	14.91	7.85	15.72	7.61	16.20	7.32	17.15	7.06	17.68	6.71	18.03
		1450	8.50	13.73	8.42	14.62	8.33	15.62	8.24	16.53	8.08	17.10	7.90	17.72	7.73	18.20	7.46	19.21
		1530	9.05	14.63	8.97	15.60	8.87	16.63	8.80	17.52	8.61	18.01	8.48	18.71	8.21	19.40	8.00	21.10
		1630	9.75	15.65	9.68	16.81	9.55	17.82	9.50	19.01	9.31	19.60	9.15	20.30	8.93	20.98	8.80	21.60
		1750	10.55	16.94	10.46	18.18	10.35	19.14	10.29	20.53	10.05	21.00	9.87	21.80	9.80	22.35	9.62	23.10
AMSR 125L	125A	1290	10.79	18.09	10.65	19.48	10.52	20.87	10.39	22.26	10.26	23.66	10.14	25.05	10.02	26.44	9.90	27.83
		1350	11.42	18.87	11.28	20.32	11.14	21.77	11.01	23.23	10.88	24.68	10.76	26.13	10.64	27.58	10.53	29.03
		1430	12.25	19.91	12.11	21.44	11.98	22.97	11.85	24.51	11.72	26.04	11.60	27.57	11.48	29.10	11.36	30.63
		1530	13.29	21.21	13.15	22.83	13.12	24.48	12.88	26.11	12.67	27.74	12.64	29.37	12.52	31.00	12.40	32.64
		1650	14.54	22.76	14.40	24.53	14.27	26.28	14.14	28.03	14.01	29.78	13.89	31.54	13.77	33.28	13.65	35.04

AMSR Three Lobe Roots Blower

Pressure Performance Table

Qs: Inlet air flow (m³/min)

La: Blower shaft power (Kw)

Model	Bore	RPM	Pressure															
			63.7KPA		68.6KPA		73.5KPA		78.4KPA		83.3KPA		88.2KPA		93.1KPA		98.0KPA	
			Qs	La	Qs	La	Qs	La	Qs	La	Qs	La	Qs	La	Qs	La	Qs	La
AMSR 150	150A	810	10.28	17.16	10.11	18.00	10.06	20.73	9.84	20.40	9.80	24.38	9.75	25.98	9.64	27.28	9.53	28.58
		860	11.18	17.77	11.00	19.42	10.85	20.87	10.37	22.03	10.62	25.67	10.51	26.97	10.40	28.27	10.29	29.57
		970	13.15	21.45	12.95	22.15	12.86	24.34	12.67	24.91	12.51	26.50	12.23	30.30	11.97	33.40	11.65	37.20
		1110	15.58	25.07	15.45	26.02	15.33	28.45	15.20	29.21	15.00	32.60	14.78	35.00	14.42	38.60	14.01	42.30
		1180	16.88	26.34	16.76	27.35	16.55	30.15	16.40	30.65	16.27	33.20	16.10	36.30	15.89	41.10	15.71	44.23
		1240	17.92	27.73	17.82	29.20	17.66	31.43	17.62	32.60	17.21	36.21	17.10	39.38	16.80	44.45	16.63	47.78
		1400	20.76	33.34	20.68	33.60	20.45	37.97	20.30	37.50	20.11	43.00	19.87	46.10	19.63	49.80	19.48	52.00
		1450	21.70	33.95	21.65	35.65	21.51	38.54	21.42	39.80	21.30	44.80	21.11	47.10	20.90	50.90	20.71	54.00
		1520	22.92	34.57	22.75	37.70	21.69	39.12	21.50	42.10	21.12	46.80	21.01	49.30	20.70	53.20	20.32	58.10
		1620	24.12	40.07	24.05	41.71	23.85	45.83	23.70	46.60	23.50	51.10	23.31	54.00	23.13	57.80	22.90	60.10
		1730	25.76	44.85	25.65	46.10	25.45	50.27	25.25	51.40	25.14	55.95	25.00	58.10	24.80	61.00	24.61	65.00
AMSR 200	200A	810	27.26	47.34	26.93	43.35	26.62	48.52	26.33	51.73	26.12	55.20	25.87	58.20	25.61	61.40	25.34	64.61
		900	31.45	47.64	31.14	51.23	30.85	54.52	30.54	57.85	30.21	60.80	29.90	64.01	29.58	67.20	29.26	70.41
		980	35.05	53.03	34.72	56.75	34.38	60.55	34.05	64.23	33.80	66.80	33.62	69.10	33.36	74.87	33.01	80.09
		1070	39.35	58.83	39.13	63.73	38.92	67.37	38.75	71.44	38.58	74.01	38.37	77.20	38.11	80.50	37.90	84.20
		1150	43.03	64.33	42.74	68.63	42.45	73.34	42.25	77.66	42.03	80.10	41.81	84.20	41.63	87.50	41.45	90.70
		1230	46.41	69.32	46.21	74.22	46.02	78.81	45.83	83.52	45.60	86.10	45.42	89.10	45.20	92.30	45.02	96.10
		1310	49.72	74.81	49.53	79.71	49.32	84.72	49.11	89.76	48.90	92.10	48.68	95.30	48.41	99.20	48.25	105.10
		1390	53.03	79.65	52.82	84.91	52.71	90.24	52.52	95.55	52.18	98.70	52.10	103.20	51.90	107.20	51.72	112.10
		1480	56.92	85.61	56.82	91.32	56.71	96.72	56.53	102.40	56.21	106.30	56.10	110.10	55.75	115.20	55.40	120.00
AMSR 250	250A	990	61.80	83.20	61.20	88.90	60.40	93.60	59.80	99.70	59.20	112.10	58.80	120.10	58.30	129.60	58.01	137.20
		1170	71.20	96.10	69.60	101.50	69.40	108.50	69.20	115.10	68.60	126.20	68.20	134.40	67.70	140.10	67.10	152.10
		1250	76.40	103.50	76.10	110.80	75.60	118.20	75.10	125.20	74.50	142.20	74.10	149.10	73.40	155.20	73.20	165.20
		1360	86.50	112.50	86.20	125.60	85.70	133.90	85.40	142.40	85.10	154.10	84.70	165.20	84.30	177.10	84.20	183.10
		1480	93.70	126.90	93.40	136.20	93.20	145.60	92.60	154.30	92.20	170.10	91.80	184.10	91.50	192.10	91.20	205.20
AMSR 300	300A	990	86.90	114.70	86.70	123.60	86.40	127.10	86.10	135.10	85.50	150.10	85.10	165.10	84.60	172.30	83.80	181.50
		1170	102.50	135.30	102.30	145.30	102.10	150.10	101.80	159.80	101.50	170.50	101.10	182.10	100.80	200.00	100.50	227.20
		1250	110.40	145.40	110.20	155.80	110.00	161.70	109.80	172.40	109.30	187.10	108.90	203.10	108.60	220.10	108.30	234.10
		1360	123.20	162.60	123.10	176.60	122.70	180.40	122.50	192.30	122.20	206.10	122.10	217.50	121.70	232.10	121.50	254.50
		1480	134.40	177.80	134.20	190.60	133.80	196.70	133.50	209.90	132.80	213.10	132.00	235.10	131.50	250.10	130.8	270.1
AMSR 350	350A	990	110.65	158.50	109.40	170.70	108.15	181.80	106.90	195.10	105.70	207.30	104.50	219.50	103.35	231.70	102.20	243.90
		1170	135.95	187.30	134.70	201.70	133.50	216.15	132.30	230.60	131.15	245.00	130.00	259.40	128.85	273.80	127.70	288.20
		1250	147.25	200.00	146.00	215.50	144.80	230.90	143.60	246.30	142.45	261.70	141.30	277.10	140.15	292.50	139.00	307.90
		1360	162.65	217.75	161.40	234.50	160.25	251.25	159.10	268.00	157.95	284.75	156.80	301.50	155.65	318.00	154.50	335.00
		1480	179.55	236.95	178.30	254.50	177.10	273.40	175.90	291.60	174.75	309.85	173.60	328.10	172.50	346.30	171.40	364.00

AMSR-V Roots Vacuum Pump

Vacuum Performance Table

Qs: Inlet air flow (m3/min)

La: Pump shaft power (Kw)

Model	RPM	Vacuum																							
		-13.3KPA		-19.9KPA		-26.6KPA		-33.3KPA		-39.9KPA		-46.6KPA		-53.3KPA		-59.9KPA		-66.5KPA		-73.3KPA		-79.9KPA			
		Qs	La	Qs	La	Qs	La	Qs	La	Qs	La	Qs	La	Qs	La	Qs	La	Qs	La	Qs	La	Qs	La		
AMSR 50V	1100	1.12	0.36	1.03	0.55	0.94	0.74	0.86	0.93																
	1230	1.29	0.42	1.20	0.67	1.10	0.88	1.02	1.08																
	1350	1.45	0.58	1.36	0.80	1.26	1.02	1.16	1.24																
	1470	1.62	0.74	1.54	0.96	1.45	1.18	1.35	1.40	1.25	1.62	1.21	1.75												
	1560	1.76	0.86	1.69	1.09	1.60	1.31	1.50	1.54	1.37	1.76	1.31	1.89												
	1660	1.88	0.93	1.81	1.17	1.71	1.41	1.61	1.66	1.48	1.90	1.42	2.01												
	1750	1.99	0.99	1.92	1.27	1.82	1.50	1.71	1.76	1.58	2.02	1.52	2.17												
	1850	2.12	1.13	2.05	1.39	1.95	1.65	1.84	1.91	1.71	2.19	1.64	2.32												
	1960	2.27	1.28	2.20	1.55	2.10	1.81	1.99	2.08	1.90	2.34	1.85	2.50												
	2120	2.46	1.56	2.38	1.84	2.27	2.21	2.15	2.40	2.02	2.67	1.95	2.83												
AMSR 65V	1100	1.57	0.75	1.43	0.95	1.30	1.21	1.16	1.45																
	1340	1.83	0.84	1.69	1.09	1.54	1.35	1.40	1.61																
	1360	2.08	0.93	1.93	1.24	1.78	1.52	1.64	1.81																
	1460	2.27	1.05	2.13	1.35	1.99	1.65	1.84	1.96	1.70	2.26	1.61	2.44												
	1550	2.43	1.13	2.32	1.45	2.17	1.77	2.03	2.09	1.88	2.41	1.50	2.60												
	1670	2.70	1.24	2.56	1.58	2.42	1.93	2.37	2.28	2.13	2.62	2.05	2.83												
	1770	2.90	1.32	2.76	1.69	2.62	2.06	2.49	2.43	2.35	2.79	2.27	3.03												
	1860	3.08	1.44	2.94	1.82	2.80	2.20	2.65	2.59	2.51	2.98	2.44	3.20												
	1960	3.33	1.60	3.18	2.00	3.03	2.41	2.89	2.81	2.74	3.23	2.72	3.47												
	2150	3.57	1.84	3.43	2.28	3.30	2.72	3.16	3.18	3.02	3.60	2.92	3.86												
AMSR 80V	1130	2.92	1.10	2.79	1.58	2.65	1.93	2.50	2.40																
	1240	3.29	1.30	3.15	1.70	3.00	2.14	2.85	2.63	2.69	3.11	2.62	3.40												
	1300	3.49	1.40	3.35	1.80	3.20	2.30	3.05	2.80	2.89	3.30	2.82	3.60	2.74	4.50	2.63	4.80	2.50	5.20						
	1370	3.73	1.44	3.59	1.96	3.44	2.49	3.29	3.01	3.13	3.53	3.06	3.84	2.92	5.01	2.80	5.43	2.69	6.01						
	1470	4.03	1.60	3.89	2.16	3.74	2.73	3.59	3.30	3.43	3.86	3.35	4.20	3.28	5.43	3.17	5.79	3.04	6.12	2.92	6.53	2.80	6.94		
	1570	4.35	1.82	4.21	2.40	4.07	2.99	3.92	3.57	3.77	4.16	3.66	4.51	3.52	5.73	3.41	6.51	3.30	6.59	3.18	7.10	3.03	7.58		
	1660	4.64	2.00	4.51	2.62	4.37	3.24	4.22	3.85	4.06	4.46	3.96	4.82	3.86	6.11	3.75	6.63	3.63	7.02	3.51	7.53	3.40	8.01		
	1750	4.95	2.23	4.81	2.85	4.67	3.48	4.53	4.11	4.38	4.73	4.27	5.10	4.16	6.70	4.04	7.21	3.92	7.83	3.80	8.42	3.68	9.13		
	1840	5.23	2.42	5.10	3.09	4.96	3.75	4.81	4.42	4.65	5.09	4.55	5.48	4.43	7.50	4.31	8.12	4.20	8.78	4.10	9.32	4.95	9.93		
	1930	5.53	2.46	5.40	3.33	5.26	4.02	5.11	4.72	4.95	5.41	4.85	5.82	4.73	8.05	4.61	8.64	4.50	9.18	4.38	9.89	4.26	10.49		
AMSR 100V	1070	4.35	1.56	4.06	2.24	3.80	2.92	3.57	3.60																
	1160	4.83	1.80	4.56	2.53	4.29	3.27	4.03	4.10	3.78	4.72	3.63	5.15	3.51	5.85	3.83	6.32								
	1240	5.27	1.97	4.99	2.74	4.72	3.52	4.46	4.29	4.20	5.07	4.07	5.52	3.93	6.45	3.82	7.03	3.70	7.69	3.58	8.43	3.42	9.03		
	1320	5.80	2.09	5.54	2.94	5.27	3.79	5.01	4.65	4.74	5.59	4.58	6.00	4.46	7.13	4.35	7.80	4.23	8.50	4.12	9.35	4.10	10.20		
	1480	6.51	2.27	6.28	3.19	6.05	4.14	5.82	5.05	5.60	5.97	5.47	6.51	5.35	8.03	5.24	8.84	5.12	9.63	5.02	10.48	4.83	11.23		
	1580	6.99	2.45	6.77	3.43	6.55	4.44	6.33	5.44	6.10	6.40	5.96	6.98	5.84	9.00	5.72	9.82	5.60	10.71	5.47	11.58	5.35	12.40		
	1700	7.57	2.66	7.37	3.72	7.16	4.79	6.95	5.86	6.73	6.92	6.60	7.56	6.49	9.87	6.37	10.63	6.25	11.52	6.12	12.38	6.00	13.20		
	1790	8.00	2.87	7.81	3.95	7.60	5.07	7.38	6.19	7.15	7.27	7.01	7.93	6.83	10.71	6.70	11.53	6.58	12.36	6.46	13.20	6.14	14.15		
	1890	8.47	3.03	8.29	4.21	8.09	5.39	7.88	6.56	7.66	7.74	7.53	8.45	7.40	11.63	7.28	12.50	7.15	13.38	7.02	14.28	6.84	16.20		
	AMSR 125V	980	6.24	2.27	5.97	3.17	5.70	4.07	5.42	4.97	5.14	5.86	5.01	6.40	4.84	8.10	4.72	8.93	4.60	9.78	4.48	10.69	4.35	11.60	
1050		6.75	2.60	6.68	3.53	6.21	4.47	5.94	5.51	5.66	6.53	5.61	6.89	5.50	8.82	5.38	9.75	5.26	10.68	5.14	11.58	5.00	12.56		
1200		7.77	3.26	7.51	4.31	7.25	5.37	6.98	6.42	6.69	7.47	6.58	8.08	6.43	9.95	6.30	11.20	6.26	12.23	6.13	13.28	6.00	14.30		
1310		8.57	3.71	8.36	4.87	8.13	6.02	7.88	7.18	7.61	8.33	7.44	9.00	7.30	10.82	7.18	11.80	7.05	12.78	6.90	13.80	6.75	14.93		
1410		9.27	4.05	9.05	5.29	8.82	6.53	8.57	7.77	8.30	9.00	8.15	9.73	8.00	11.75	7.86	12.83	7.72	13.90	7.60	15.03	7.46	16.18		
1470		9.70	4.37	9.48	5.66	9.25	6.95	9.02	8.23	8.78	9.50	8.50	10.28	8.35	12.80	8.22	13.93	8.18	15.02	8.04	16.18	7.80	17.23		
1550		10.37	4.62	10.10	5.98	9.82	7.34	9.58	8.70	9.33	10.10	9.13	10.92	9.00	13.95	8.86	15.03	8.73	16.12	8.60	17.23	8.45	18.38		
1650		11.00	5.18	10.70	6.64	10.50	8.11	10.30	9.58	10.10	11.10	9.61	11.93	9.50	15.03	6.53	16.21	9.20	17.35	9.05	18.48	8.88	19.54		
1770		11.80	5.70	11.50	7.23	11.30	8.75	11.10	10.30	10.90	11.80	10.38	12.71	10.23	16.20	10.07	17.41	9.90	18.63	9.75	19.80	9.60	21.00		
1880		12.50	6.25	12.30	7.86	12.00	9.46	11.80	11.10	11.60	12.70	11.16	13.66												
2000	13.37	6.84	13.17	8.55	12.85	10.27	12.51	11.97	12.21	13.69	12.04	14.72													

AMSR-V Roots Vacuum Pump

Vacuum Performance Table

Qs: Inlet air flow (m3/min)

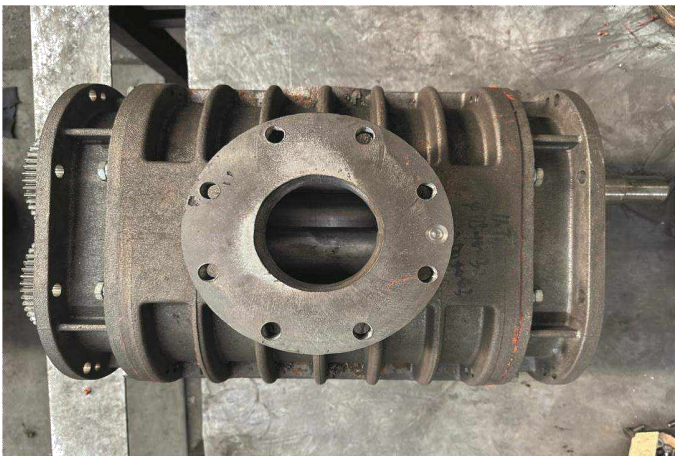
La: Pump shaft power (Kw)

Model	RPM	Vacuum																							
		-13.3KPA		-19.9KPA		-26.6KPA		-33.3KPA		-39.9KPA		-46.6KPA		-53.3KPA		-59.9KPA		-66.5KPA		-73.3KPA		-79.9KPA			
		Qs	La	Qs	La	Qs	La	Qs	La	Qs	La	Qs	La	Qs	La	Qs	La	Qs	La	Qs	La	Qs	La		
AMSR 150SV	980	9.08	3.30	8.69	4.61	8.29	5.92	7.89	7.23	7.48	8.53														
	1050	9.82	3.78	9.43	5.13	9.04	6.50	8.64	7.87	8.24	9.24														
	1200	11.31	4.74	10.93	6.27	10.55	7.81	10.16	9.34	9.74	10.87														
	1310	12.47	5.50	12.17	7.09	11.83	8.76	11.47	10.45	11.08	12.12														
	1410	13.49	5.89	13.17	7.70	12.84	9.50	12.47	11.31	12.08	13.10														
	1470	14.12	6.36	13.80	8.24	13.46	10.11	13.13	11.98	12.78	13.83														
	1550	15.09	6.72	14.70	8.70	14.29	10.68	14.34	12.66	13.58	14.70														
	1650	16.01	7.54	15.57	9.66	15.28	11.80	14.99	13.94	14.70	16.16														
	1770	17.18	8.29	16.74	10.52	16.45	12.74	16.16	14.99	15.87	17.18														
	1880	18.20	9.10	17.90	11.44	17.47	13.77	17.18	16.16	16.89	18.49														
AMSR 150V	870	13.80	4.20	13.30	6.00	12.80	7.80	12.30	9.77	11.80	11.70														
	990	13.80	4.20	15.10	6.58	14.60	8.70	14.20	10.80	13.80	12.90														
	1120	17.70	6.61	17.30	8.94	16.80	11.30	16.30	13.60	15.80	15.90	15.55	17.30												
	1200	19.20	7.57	18.70	9.93	18.20	13.30	17.80	14.70	17.30	17.00	16.93	18.48	16.80	27.75	16.65	27.73	16.5	30.82	16.35	33.89	16.2	36.73		
	1270	20.30	8.40	19.90	10.80	19.50	13.20	19.10	15.60	18.70	18.00	18.09	19.42	17.90	27.63	17.83	30.21	17.7	33.83	17.65	36.91	17.5	40.01		
	1410	22.50	10.50	22.10	13.20	21.70	15.90	21.30	18.60	20.90	21.30	20.69	22.90	20.5	30.1	20.35	33.25	20.2	36.37	20.05	39.4	19.90	42.68		
	1540	24.70	12.50	24.20	15.40	23.70	18.30	23.20	21.20	22.70	24.00	22.25	25.70	22.1	33.35	21.95	36.21	21.8	39.3	21.65	42.43	21.50	45.58		
	1670	26.50	14.30	26.00	17.40	25.50	29.50	25.00	23.50	24.50	26.60	24.22	28.41	24.08	36.4	23.92	39.38	23.87	42.43	23.72	45.50	23.58	48.71		
	1780	27.80	15.90	27.30	19.20	26.80	22.50	26.30	25.80	25.7	29.1	25.5	31.07	25.35	39.52	25.20	42.41	25.05	45.60	24.90	48.21				
	1900	29.25	17.77	28.81	21.09	27.91	24.83	27.34	28.45	26.72	32.26	26.47	33.93												
AMSR 175V	970	21.29	8.09	28.81	21.09	19.57	13.69	18.86	15.85	18.01	18.15														
	1110	24.84	10.07	23.90	13.81	23.10	16.65	22.55	19.14	21.51	21.70														
	1240	28.18	11.96	27.24	15.70	26.55	19.01	25.88	21.74	24.96	25.15														
	1400	32.18	14.20	31.32	18.48	30.57	22.64	29.95	25.53	29.08	29.27														
	1520	35.15	16.11	34.25	20.99	33.65	24.85	32.91	28.58	32.03	32.33														
	1620	37.47	18.02	36.62	23.57	35.79	27.67	35.13	31.51	34.23	35.84														
	1730	40.00	22.19	39.12	26.00	38.32	30.85	37.66	35.35	36.67	39.61														
AMSR 200V	810	31.07	10.38	29.92	14.89	29.01	18.96	28.16	23.20	27.08	27.43	25.72	29.85	25.65	40.1	25.50	45.85	25.45	50.90	25.20	55.30	25.03	60.78		
	900	34.92	12.49	33.98	17.37	33.12	22.01	33.28	26.82	31.19	31.49	29.76	34.3	29.60	45.20	28.45	50.97	29.30	56.51	28.15	62.60	28.94	67.71		
	980	38.39	14.40	37.24	19.66	36.85	21.80	35.97	30.06	35.1	35.14	34.6	38.19	34.35	50.50	34.30	55.80	34.33	60.89	34.00	67.00	33.87	72.50		
	1070	42.37	16.95	41.02	21.61	40.97	27.72	40.09	33.57	38.86	39.32	36.37	42.81	36.22	55.60	36.07	60.71	35.90	65.83	35.74	71.10	35.68	76.30		
	1150	45.90	18.61	45.25	24.06	44.65	30.15	43.72	36.35	42.50	42.76	40.96	46.16	40.80	60.71	40.65	65.83	40.50	71.22	40.32	76.58	40.18	81.10		
	1230	49.01	20.58	48.38	26.74	47.79	33.47	47.02	40.25	45.87	46.83	43.78	50.74	43.60	65.90	43.45	71.20	43.30	76.32	43.13	81.83	43.00	86.00		
	1310	52.26	23.03	51.61	29.61	50.95	36.65	50.33	43.84	49.24	50.69	46.60	55.13	46.40	69.00	46.25	75.28	46.10	80.50	45.95	85.80	45.78	91.00		
	1390	55.22	25.15	54.65	32.33	54.11	39.86	53.61	47.40	52.64	55.03	49.44	59.57	49.28	73.20	49.14	80.80	49.00	85.01	48.89	93.20	48.68	98.50		
	1480	58.69	27.52	58.17	34.83	57.64	49.13	57.05	50.20	56.46	59.06	52.61	63.76	52.40	80.03	52.25	86.00	52.08	91.28	51.90	96.50	51.7	102.2		
AMSR 250V	980	62.70	25.15	62.1	33.54	61.00	45.15	60.20	51.36	59.50	57.26	58.90	64.42	58.70	82.00	58.48	88.30	58.26	95.20	58	103.5	57.73	110.4		
	1170	73.9	35.06	73	36.99	72.20	50.00	71.40	57.12	70.50	65.28	69.40	72.59	69.15	90.10	68.93	98.02	68.73	106.2	68.5	116	68.25	128.02		
	1250	78.6	36.2	77.5	40.16	76.40	55.58	75.50	61.05	74.10	69.75	73.00	78.47	72.80	98.50	72.58	107.3	72.28	115.6	72	124	71.75	132.5		
	1360	86.6	37.21	85.90	44.18	84.80	60.47	83.70	68.83	82.00	78.66	80.10	87.38	79.8	107.3	79.51	117.2	79.18	128	78.9	138.5	78.61	148.8		
	1480	93.2	40.5	91.70	46.80	89.80	63.43	88.50	72.26	87.80	82.58	86.20	92.91	86	118.5	85.73	129.3	85.58	139.8	85.26	150.3	85	162.7		
AMSR 300V	980	89	40	88.40	47.25	87.80	62.00	87.00	70.58	86.20	82.68	85.10	87.54	84.75	116.3	84.32	128.6	84	140.7	83.63	153.4	83.21	166.3		
	1170	105.40	45.11	104.50	52.13	103.20	73.31	102.00	82.44	100.80	92.00	98.8	103.5	98.4	129	98	141.3	97.5	154	97	167.3	96.4	189.8		
	1250	112.50	48.20	111.60	59.67	110.80	78.32	110.00	91.37	109.10	100.65	108	110.57	107.3	139.5	106.7	145.1	106.1	164	105.5	177	104.9	199.3		
	1360	125.40	52.44	124.50	64.93	123.00	82.14	122.50	94.68	121.2	108.21	120	120.3	119.3	151.3	118.4	163.7	117.2	175.8	116	198	114.3	212.3		
	1480	136.30	61.82	135.40	76.08	134.20	98.91	133	112.4	131.5	132.64	130	137.37	128.3	164	127	177.3	125.5	190.2	124.1	214.3	122.8	235.2		

• Please contact us for outline dimension and installation drawing, performance curve and noise curve.

AirMMax Factory







Qingdao AirMMax Aeration Equipment Co., Ltd

Add: ZhangJiaLou Industrial Park, Qingdao City, Shandong Province, China.

M: +8618354211179 (whatsapp/wechat)

Email: inquiry@airmm.com

Website: www.AirMMMaxBlower.com

