

# AirMMax

## AMZG Three Lobe Roots Blower

[www.AirMMaxBlower.com](http://www.AirMMaxBlower.com)



Qingdao AirMMax Aeration Equipment Co., Ltd



## ABOUT US

We established AirMMax with the vision to develop the company into a leading roots blower and turbo blower manufacturer and supplier. We built a 10000 m<sup>2</sup> modern production plant equipped with automatic production CNC machine and experienced engineer and skilled assembly and installation worker in our team, which ensure AirMMax roots blower and turbo blower achieve a better operational performance and customer satisfaction.

We focus on the R&D, production, marketing and service of roots blower, turbo blower and turbo blower aerator, we design and manufacture roots blower, turbo blower and turbo blower aerator based on its unique application site and operating condition.

We have professional engineer who knows blower aeration system in water treatment plant, we have aquaculture expert who have 10 years experience in aquaculture aeration system in high density shrimp farming and hatchery, which ensure turbo blower aerator save more electricity, and we have biogas blower expert who is skilled in POME treatment to biogas power generation.

We work as solution provider on the basis of roots blower, turbo blower and turbo blower aerator, our aquaculture technical team design aeration system for high density shrimp farming and hatchery, our purchase expert launch one-stop purchase package including aerotube and diffuser, HDPE liner for customer.

Pursuit of “Customer Supreme, Quality First”, we look forward to your continuous trust and support.



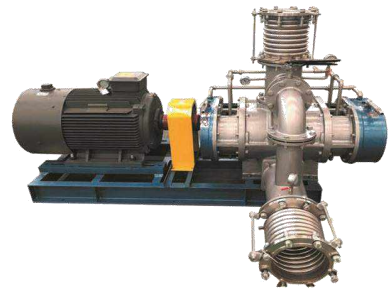
## ROOTS BLOWER

AirMMax roots blower is three lobe type roots blower with pressure reaching up to 150kpa in single stage roots blower and pressure reaching up to 200kpa in double stage roots blower, air capacity reach up to 30000m<sup>3</sup>/hour.



## STAINLESS STEEL BLOWER

AirMMax stainless steel blower is SS304, SS316L and 2205 material, we cooperate qualified stainless steel foundry factory and machined by professional stainless steel CNC machine.



## BIOGAS BLOWER

AirMMax biogas blower is specially designed and developed to boost biogas in biogas plant in the palm oil mill effluent (POME) treatment system.



## TURBO BLOWER

AirMMax has both air bearing turbo blower and magnetic bearing turbo blower.





# AMZG Three Lobe Roots Blower

## Pressure Performance Table

Qs: Inlet air flow (m<sup>3</sup>/min)

La: Blower shaft power (Kw)

Model	RPM	Pressure ( $\Delta P$ )																			
		100 mbar		200 mbar		300 mbar		400 mbar		500 mbar		600 mbar		700 mbar		800 mbar		900 mbar		1000 mbar	
		Qs	La	Qs	La	Qs	La	Qs	La	Qs	La	Qs	La	Qs	La	Qs	La	Qs	La	Qs	La
ZG-50	1450	1.12	0.7	0.88	1	0.75	1.2	0.63	1.5	0.5	1.8										
	2000	1.76	1	1.42	1.4	1.33	1.7	1.23	2.1	1.19	2.5	1	2.9	0.93	3.3						
	2500	2.34	1.2	2	1.7	1.82	2.1	1.72	2.6	1.6	3.1	1.54	3.6	1.43	4	1.38	4.5				
	3000	2.93	1.4	2.59	1.9	2.41	2.5	2.21	3.1	2.06	3.7	1.93	4.2	1.88	4.8	1.8	5.4	1.7	6		
	3500	3.51	1.6	3.17	2.2	2.99	2.9	2.79	3.6	2.64	4.2	2.51	4.9	2.38	5.6	2.25	6.2	2.18	6.9	2.1	7.6
	4000	4.1	1.8	3.76	2.5	3.58	3.3	3.38	4.1	3.23	4.8	3.1	5.6	2.96	6.3	2.84	7.1	2.77	7.9	2.7	8.6
	4500	4.68	2	4.34	2.8	4.16	3.7	3.95	4.5	3.81	5.4	3.68	6.3	3.53	7.1	3.42	8	3.35	8.8	3.29	9.7
5000	5.26	2.2	4.92	3.1	4.74	4.1	4.53	5	4.39	6	4.26	6.9	4.13	7.9	4	8.8	3.93	9.7	3.84	10.7	
ZG-65	2000	2.98	1.4	2.46	2.1	2.13	2.7	1.78	3.4	1.53	4	1.33	4.6	1.17	5.3						
	2500	3.97	1.8	3.45	2.6	3.12	3.4	2.77	4.2	2.52	5	2.32	5.8	2.16	6.6	2.02	7.4	1.91	8.2		
	3000	4.95	2.2	4.43	3.1	4.1	4.1	3.75	5.1	3.5	6	3.3	7	3.14	8	3	8.9	2.89	9.9	2.82	10.8
	3500	5.93	2.5	5.41	3.7	5.08	4.8	4.73	5.9	4.48	7	4.28	8.1	4.12	9.3	3.98	10.4	3.87	11.5	3.8	12.6
	4000	6.91	2.9	6.39	4.2	6.06	5.5	5.71	6.7	5.46	8	5.26	9.3	5.1	10.6	4.96	11.9	4.85	13.1	4.78	14.4
	4500	7.89	3.2	7.37	4.7	7.04	6.1	6.69	7.6	6.44	9	6.24	10.5	6.08	11.9	5.94	13.3	5.83	14.8	5.76	16.2
5000	8.88	3.6	8.36	5.2	8.02	6.8	7.68	8.4	7.43	10	7.23	11.6	7.07	13.2	6.93	14.8	6.82	16.4	6.75	18	
ZG-80	2000	6.01	2.3	5.51	3.5	5.17	4.7	4.88	5.9	4.65	7	4.46	8.2	4.3	9.4	4.16	10.6				
	2300	7.12	2.7	6.63	4	6.29	5.4	6.01	6.8	5.78	8.1	5.59	9.5	5.43	10.9	5.29	12.2	5.17	13.6		
	2500	7.86	2.9	7.38	4.4	7.05	5.9	6.76	7.3	6.53	8.8	6.34	10.3	6.18	11.8	6.04	13.3	5.93	14.8	5.83	16.3
	2800	8.98	3.3	8.5	4.9	8.17	6.6	7.89	8.2	7.67	9.9	7.48	11.5	7.31	13.2	7.18	14.8	7.06	16.5	6.95	18.1
	3000	9.72	3.6	9.25	5.4	8.92	7.1	8.64	8.9	8.42	10.7	8.23	12.5	8.07	14.3	7.93	16	7.81	17.8	7.71	19.6
	3300	10.8	4	10.4	5.9	10.1	7.9	9.77	9.8	9.55	11.8	9.36	13.8	9.2	15.7	9.06	17.7	8.94	19.6	8.83	21.6
	3500	11.5	4.2	11.1	6.3	10.8	8.3	10.5	10.4	10.3	12.5	10.1	14.6	9.95	16.6	9.81	18.7	9.69	20.8	9.59	22.9
	3800	12.7	4.6	12.2	6.8	11.8	9.1	11.6	11.3	11.4	13.6	11.2	15.8	11.1	18.1	10.9	20.3	10.8	22.6	10.7	24.8
	4000	13.4	4.8	13	7.1	12.8	9.5	12.4	11.9	12.1	14.2	12	16.6	11.8	19	11.7	21.4	11.6	23.7	11.5	26.1
ZG-100	2000	9.13	3.2	8.43	5	7.93	6.7	7.51	8.5	7.17	10.3	6.88	12.1	6.63	13.9	6.42	15.6	6.23	17.4		
	2300	10.8	3.7	10.1	5.8	9.62	7.8	9.21	9.9	8.87	11.9	8.59	14	8.34	16	8.13	18	7.94	20.1		
	2500	11.9	4.1	11.2	6.3	10.8	8.6	10.3	10.8	10	13	9.73	15.2	9.48	17.5	9.26	19.7	9.08	21.9	8.91	24.1
	2800	13.6	4.7	12.9	7.2	12.5	9.7	12	12.2	11.7	14.7	11.4	17.2	11.2	19.7	11	22.2	10.8	24.7	10.6	27.2
	3000	14.7	5.1	14.1	7.8	13.7	10.4	13.2	13.1	12.8	15.8	12.6	18.5	12.3	21.2	12.1	23.8	11.9	26.5	11.7	29.2
	3300	16.4	5.5	15.7	8.5	15.4	11.4	14.9	14.4	14.6	17.3	14.3	20.2	14	23.2	13.8	26.1	13.6	29.1	13.5	32
	3500	17.5	5.8	16.9	8.9	16.5	12.1	16	15.2	15.7	18.3	15.4	21.4	15.2	24.5	14.9	27.7	14.8	30.8	14.6	33.9
	3800	19.2	6.3	18.5	9.7	18.2	13	17.7	16.4	17.4	19.8	17.1	23.2	16.9	26.6	16.7	30	16.5	33.3	16.3	36.7
4000	20.3	6.6	19.7	10.1	19.3	13.7	18.8	17.2	18.5	20.8	18.3	24.4	18	27.9	17.8	31.5	17.6	35.1	17.4	38.6	
ZG-125	1450	13.4	4.1	12.5	7	11.9	9.7	11.3	12.4	10.9	14.5	10.6	17.7	10.3	20.3	10	23	9.82	25.7	9.64	28.3
	1750	16.7	4.9	15.8	8.1	15.3	11.3	14.7	14.5	14.3	17.6	13.9	20.8	13.6	24	13.4	27.2	13.3	30.4	13	33.5
	2000	19.5	5.6	18.6	9.2	18	12.9	17.5	16.5	17.1	20.2	16.7	23.8	16.4	27.5	16.2	31.1	16	34.8	15.8	38.4
	2300	22.8	6.4	21.9	10.6	21.4	14.8	20.8	18.9	20.4	23.1	20	27.3	19.8	31.5	19.5	35.7	19.4	39.9	19.2	44
	2600	26.1	7.2	25.2	12	24.7	16.7	24.1	21.4	23.7	26.2	23.4	30.9	23.1	35.6	22.9	40.4	22.7	45.1	22.5	49.8
	2800	28.3	7.8	27.5	12.9	26.8	18	26.4	23.1	26	28.2	25.6	33.3	25.4	38.4	25.1	43.5	24.9	48.6	24.7	53.7
	3000	30.5	8.3	29.7	13.8	29.1	19.3	28.6	24.8	28.2	30.2	27.9	35.7	27.6	41.2	27.4	46.7	27.2	52.2	27	57.6
ZG-150	1450	21.8	6.3	20.5	10.6	19.6	14.8	18.8	19	18.2	23.2	17.7	27.4	17.3	31.7	17	35.9	16.7	40.1	16.5	44.3
	1750	27.1	7.5	25.8	12.6	24.9	17.7	24.2	22.7	23.6	27.8	23.2	32.9	22.8	38	22.4	43.1	22.2	48.2	21.9	53.2
	2000	31.6	8.5	30.3	14.3	29.4	20.1	28.7	25.9	28.2	31.8	27.7	37.6	27.3	43.4	27	49.2	26.7	55	26.5	60.8
	2300	36.9	9.7	35.7	16.3	34.9	23	34.2	29.7	33.6	36.4	33.2	43	32.8	49.7	32.5	56.4	32.2	63	32	69.7
	2600	42.3	10.8	41.1	18.3	40.4	25.9	39.6	33.4	39.1	40.9	38.6	48.5	38.2	56	37.9	63.5	37.7	71.1	37.4	78.6
	2800	45.9	11.6	44.7	19.7	43.8	27.8	43.2	35.9	42.7	44	42.3	52.2	41.9	60.3	41.6	68.4	41.3	76.5	41.1	84.6
ZG-200	3000	49.4	12.3	48.3	21	47.6	29.7	46.9	38.4	46.3	47.2	45.9	55.9	45.5	64.6	45.2	73.3	44.9	82	44.7	90.7
	970	38.6	10.4	36.6	17.8	35	25.1	33.9	32.5	32.9	39.9	32	47.3	31.4	54.7	30.7	62	30.2	69.4	29.9	76.8
	1250	51.5	13.5	49.5	22.9	48	32.4	46.8	41.9	45.9	51.4	45.1	60.8	44.5	70.3	43.8	79.8	43.3	89.3	42.9	98.7
	1450	60.7	15.4	58.7	26.3	57.3	37.3	56.1	48.3	55.2	59.3	54.4	70.3	53.8	81.3	53.1	92.3	52.6	103	52.2	114
	1600	67.6	16.8	65.6	28.9	64.2	41	63.1	53.2	62.1	65.3	61.3	77.4	60.7	89.5	60.1	102	59.6	114	59.2	126
	1750	74.5	18.3	72.5	31.5	71.1	44.8	70	58.1	69.1	71.3	68.3	84.6	67.6	97.9	67.1	111	66.6	124	66.2	138
	1900	81.4	19.8	79.5	34.2	78.1	48.6	77	63	76.1	77.5	75.3	91.9	74.6	106	74.1	121	73.6	135	73.1	150
2050	88.2	21.2	86.4	36.8	85	52.3	83.9	67.9	83	83.5	82.3	99.1	81.6	115	81	130	80.5	146	80.1	161	
ZG-250	970	49.8	12.9	47.5	22.2	45.8	31.5	44.5	40.9	43.5	50.2	42.6	59.6	42	68.9	41.4	78.2				
	1250	66.2	16.4	63.9	28.5	62.3	40.6	61.1	52.7	60.1	64.8	59.2	76.8	58.6	88.9	58	101				
	1450	77.9	18.7	75.7	32.8	74.1	46.7	72.9	60.9	71.9	74.9	71.1	89	70.4	103	69.9	117				
	1600	86.7	20.6	84.5	36.2	83	51.7	81.8	67.2	80.8	82.8	80	98.3	79.3	114	78.8	129				
	1750	95.5	22.5	93.4	39.5	91.8	56.5	90.6	73.5	89.7	90.5	88.9	108	88.2	125	87.8	142				
	1900	104	24.5	102	43	101	61.5	99.5	80.1	98.6	98.6	97.8	117	97.1	136	96.6	154				
	2050	115	26.4	111	46.5	110	66.6	108	86.7	107	107	107	127	106	147	105.5	170				
ZG-300	970	89	21.7	85.6	37.6	83	53.9	80.8	69.5	78.9	85.6	77.1	102	75.5	117.4	74	133.4	72.6	149	71.2	164.8
	1100	102.1	26.5	98.7	44.6	96.1	62.9	93.9	80.5	91.9	98.6	90.2	117	88.5	134.6	87	152.6	85.6	171	84.3	188.8
	1250	117.1	32.7	114	53.5	111	73.5	109	94.4	107	115	105	135	103.6	155.8	102.1	176.4	101	197	99.3	217.3
	1350	127.1	37.4	124																	



# AMZG Three Lobe Roots Blower

## Pressure Performance Table

Qs: Inlet air flow (m<sup>3</sup>/min)

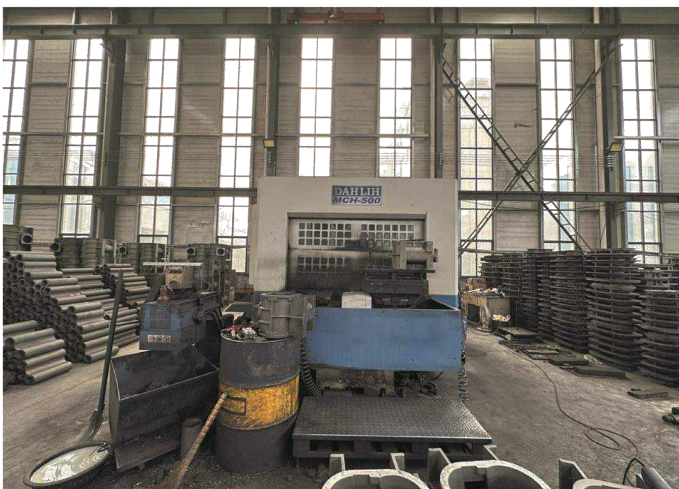
La: Blower shaft power (Kw)

Model	RPM	Vacuum ( $\Delta P$ )									
		-100 mbar		-200 mbar		-300 mbar		-400 mbar		-500 mbar	
		Qs	La	Qs	La	Qs	La	Qs	La	Qs	La
ZG-50V	2000	1.7	1	1.3	1.4	1	1.7				
	2500	2.29	1.2	1.78	1.7	1.54	2.1	1.36	2.6		
	3000	2.88	1.4	2.37	1.9	2.03	2.5	1.85	3.1		
	3500	3.46	1.6	2.95	2.2	2.61	2.9	2.33	3.6		
	4000	4.05	1.8	3.54	2.5	3.2	3.3	2.92	4.1	2.68	4.8
	4500	4.63	2	4.12	2.8	3.78	3.7	3.5	4.5	3.16	5.4
ZG-65V	5000	5.2	2.2	4.7	3.1	4.36	4.1	4.08	5	3.64	6
	2500	3.88	1.8	3.2	2.6	2.7	3.4	2.46	4.2		
	3000	4.87	2.2	4.18	3.1	3.68	4.1	3.24	5.1		
	3500	5.85	2.5	5.16	3.7	4.66	4.8	4.22	5.9		
	4000	6.83	2.9	6.14	4.2	5.64	5.5	5.2	6.7	4.86	8
	4500	7.81	3.2	7.12	4.7	6.62	6.1	6.18	7.6	5.84	9
ZG-80V	5000	8.78	3.6	8.11	5.2	7.61	6.8	7.17	8.4	6.83	10
	2000	5.94	2.3	5.31	3.5	4.76	4.7	4.21	5.9		
	2300	7.05	2.7	6.44	4	5.89	5.4	5.35	6.8		
	2500	7.8	2.9	7.19	4.4	6.65	5.9	6.11	7.3	5.52	8.8
	2800	8.91	3.3	8.31	4.9	7.78	6.6	7.24	8.2	6.66	9.9
	3000	10.9	3.6	9.06	5.4	8.53	7.1	8	8.9	7.42	10.7
ZG-100V	3300	10.9	4	10.2	5.9	9.67	7.9	9.14	9.8	8.57	11.8
	3500	11.5	4.2	10.9	6.3	10.4	8.3	9.9	10.4	9.33	12.5
	3800	12.7	4.6	12.1	6.8	11.6	9.1	11	11.3	10.5	13.6
	4000	13.5	4.8	12.8	7.1	12.3	9.5	11.8	11.9	11.2	14.2
	2000	9.04	3.2	8.14	5	7.35	6.7	6.55	8.5		
	2300	10.8	3.7	9.83	5.8	9.05	7.8	8.26	9.9		
ZG-125V	2500	11.9	4.1	11	6.3	10.2	8.6	9.41	10.8	8.55	13
	2800	13.6	4.7	12.7	7.2	11.9	9.7	11.1	12.2	10.3	14.7
	3000	14.7	5.1	13.8	7.8	13	10.4	12.3	13.1	11.4	15.8
	3300	16.4	5.5	15.5	8.5	14.7	11.4	14	14.4	13.2	17.3
	3500	17.5	5.8	16.6	8.9	15.9	12.1	15.1	15.2	14.3	18.3
	3800	19.2	6.3	18.3	9.7	17.6	13	16.8	16.4	16	19.8
ZG-150V	4000	20.3	6.6	19.4	10.1	18.7	13.7	18	17.2	17.2	20.8
	1450	13.4	4.1	12.1	7	11.1	9.7	10.1	12.4		
	1750	16.6	4.9	15.5	8.1	14.5	11.3	13.4	14.5	12.3	17.6
	2000	19.5	5.6	18.2	9.2	17.2	12.9	16.2	16.5	15.1	20.2
	2300	22.7	6.4	21.6	10.6	20.6	14.8	19.6	18.9	18.5	23.1
	2600	26.1	7.2	24.9	12	23.9	16.7	23	21.4	21.9	26.2
ZG-200V	2800	26.3	7.8	27.1	12.9	26.2	18	25.2	23.1	24.2	28.2
	3000	30.5	8.3	29.3	13.8	28.4	19.3	27.5	24.8	26.4	30.2
	1450	21.7	6.3	19.9	10.6	18.4	14.8	16.9	19		
	1750	27	7.5	25.3	12.6	23.9	17.7	22.4	22.7	20.8	27.8
	2000	31.4	8.5	29.8	14.3	28.4	20.1	27	25.9	25.5	31.8
	2300	36.8	9.7	35.2	16.3	33.9	23	32.5	29.7	31	36.4
ZG-250V	2600	42.1	10.8	40.6	18.3	39.3	25.9	38	33.4	36.5	40.9
	2800	45.7	11.6	44.2	19.7	42.9	27.8	41.7	35.9	40.2	44
	3000	49.3	12.3	47.8	21	46.6	29.7	45.3	38.4	43.9	47.2
	970	38.3	10.4	35.8	17.8	33.3	25.1	30.8	32.5		
	1250	51.2	13.5	48.6	22.9	46.3	32.4	44.1	41.9	41.4	51.4
	1450	60.4	15.4	57.8	26.3	55.6	37.3	53.3	48.3	50.8	59.3
ZG-300V	1600	67.3	16.8	64.9	28.9	62.6	41	60.3	53.2	57.8	65.3
	1750	74.2	18.3	71.8	31.5	69.5	44.8	67.3	58.1	64.9	71.3
	1900	81.1	19.8	78.6	34.2	76.5	48.6	74.3	63	71.9	77.5
	2050	88	21.2	85.6	36.8	83.5	52.3	81.3	67.9	78.9	83.5
	970	49.5	12.9	40.5	22.2	43.8	31.5	41.2	40.9	38.3	50.2
	1250	65.9	16.4	62.9	28.5	60.4	40.6	57.8	52.7	55.1	64.8
ZG-350V	1450	77.5	18.7	74.8	32.8	72.2	46.8	69.7	60.9	67	74.9
	1600	86.4	20.6	83.7	36.2	81.1	51.7	78.7	67.2	76	82.8
	1750	95.2	22.5	92.5	39.2	90	56.5	87.6	73.5	85	90.5
	1900	104	24.5	101.1	43	98.9	61.5	96.5	80.1	93.9	98.6
	2050	113	26.4	110.2	46.5	107.8	66.6	105.5	86.9	102.9	107
	970	88.6	21.7	84.3	37.7	80.4	53.6	76.2	69.7	71.6	85.7
ZG-400V	1100	101.6	26.6	97.4	44.9	93.4	62.6	89.3	80.6	84.6	98.6
	1250	116.7	32.5	112.4	53.6	108.4	73.5	104.3	94.4	99.7	114.5
	1350	126.7	37.8	122.4	59.9	118.4	81.9	114.3	104.3	109.7	126.3
	1450	136.7	42.5	132.4	66.8	128.5	90.6	124.4	114.3	119.7	137.6
	1550	146.8	50.5	142.5	75.8	138.5	101.3	134.4	126.6	129.7	151.5
	1650	156.8	56.7	152.5	83.7	148.5	110.8	144.4	137.7	139.8	164.7

• Please contact us for outline dimension and installation drawing, performance curve and noise curve.



# AirMMax Factory











## **Qingdao AirMMax Aeration Equipment Co., Ltd**

Add: ZhangJiaLou Industrial Park, Qingdao City, Shandong Province, China.

M: +8618354211179 (whatsapp/wechat)

Email: [inquiry@airmmx.com](mailto:inquiry@airmmx.com)

Website: [www.AirMMMaxBlower.com](http://www.AirMMMaxBlower.com)

